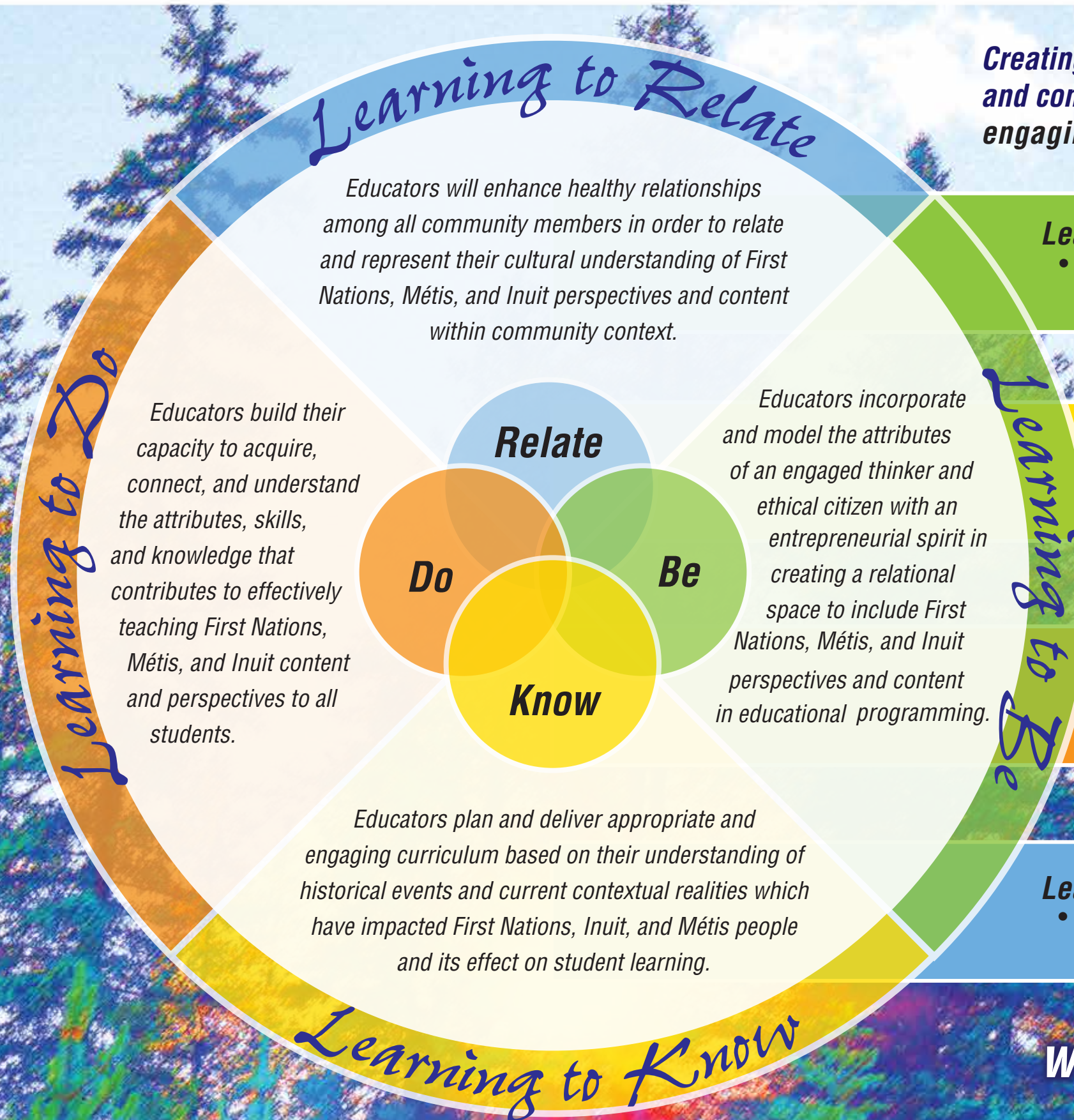




Alberta

The Provincial First Nations, Métis, and Inuit Professional Learning Project

Creating a relational space to include First Nations, Métis, and Inuit perspectives and content in educational programming by: building educator capacity; engaging learners; creating paths for success



Learning to Be: How does what we do impact who we are?

- How do you role model being an engaged thinker and ethical citizen with an entrepreneurial spirit in the context of bringing First Nations, Métis, and Inuit perspectives and content in educational programming?

Learning to Know: How does knowing relate to understanding?

- How does knowing about historical events and current contextual realities relate to how you understand students and communities differently?

Learning to Do: How does empowering differ from delegating?

- How can we empower educators with opportunities and resources to bring First Nations, Métis, and Inuit perspectives and content to their curricular programming?

Learning to Relate: How does where we learn impact how we learn?

- How can First Nations, Métis, and Inuit students see themselves represented in their educational communities?

www.fnmiprofessionallearning.ca